

Version 2017.2 Preview

Our next release features a major enhancement of the eSight Express interface, improving the user experience with a new intuitive and fully responsive design. The new design will make it easier for users to interact and navigate through the Express area from any device, with new features including instantly updating graphs and canvas map navigation to locate sites and meters. Another addition to 2017.2 is the enhancement of ENVI, which will include customisable corporate content, additional fuel types and support for KPI's.

eSight version 2017.2 is due for release Spring 2017. *

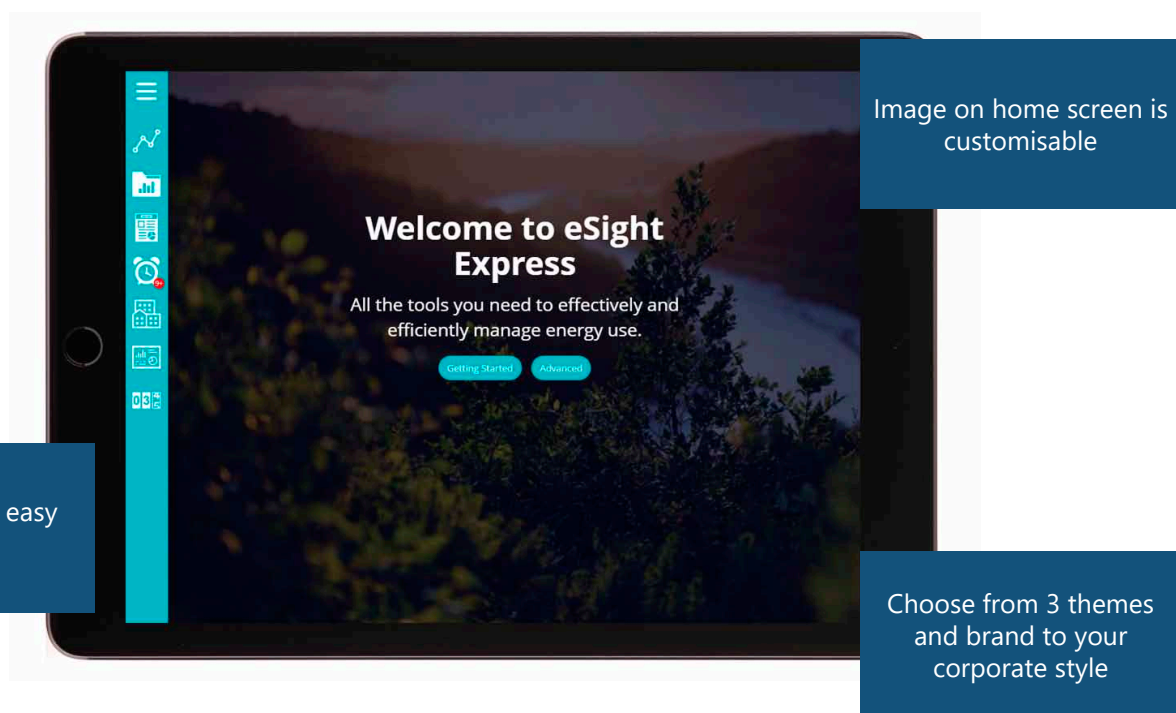
Express Interface Redesign

eSight is introducing a new redesigned Express Interface for a fully responsive experience that enables users to quickly produce graphs, identify issues, run reports and manually input meter information. As well as this, the redesign will offer smarter searching of meters and templates.

Why you need Express:

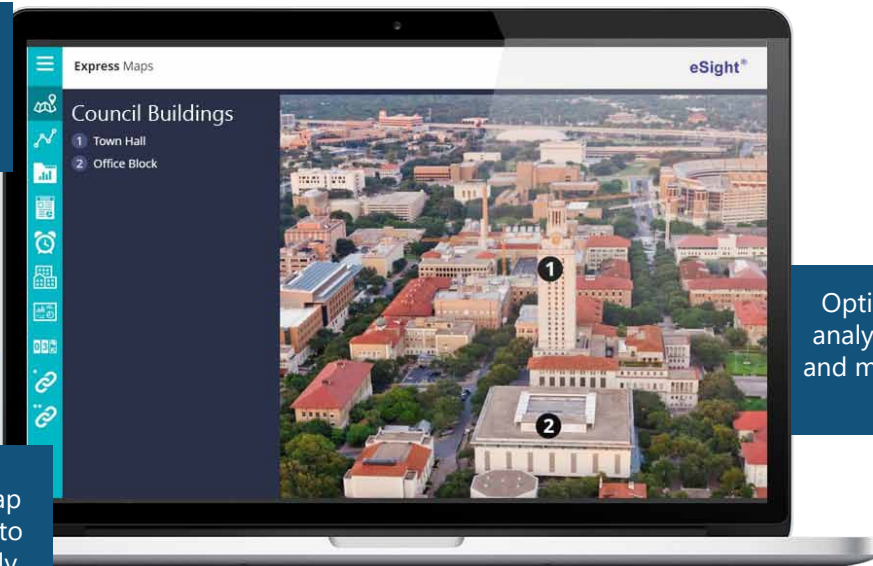
- Quickly locate and manage relevant energy data from any device
- Run energy analysis templates on instantly updating graphs
- Identify, react to and acknowledge potential issues with clear indicators

New Responsive Interface



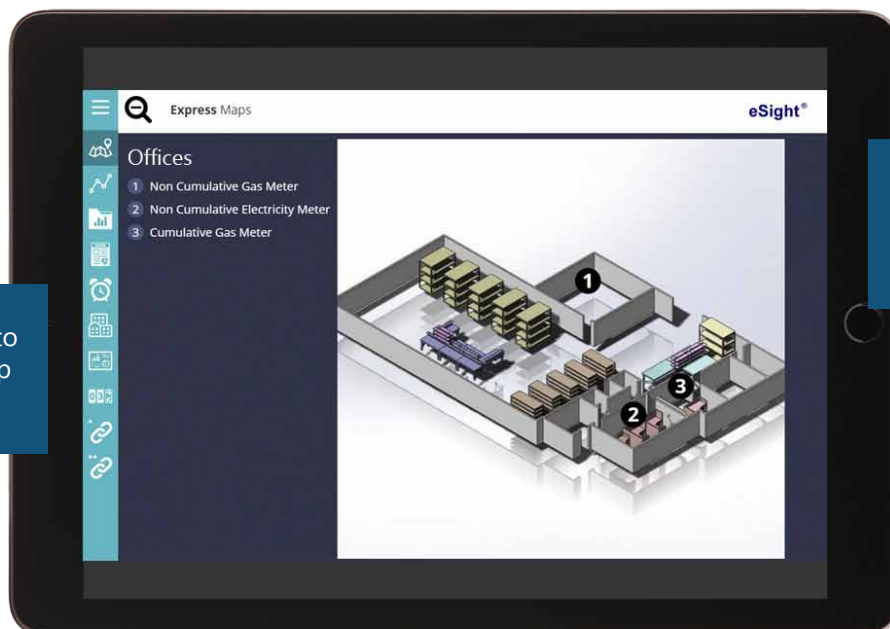
Canvas Map Navigation

Select the new Maps view to locate sites and meters (branding level 2)



Options to run energy analysis, reports, alarms and more are available at map view

Plot buildings on map view to drill down into energy analysis easily

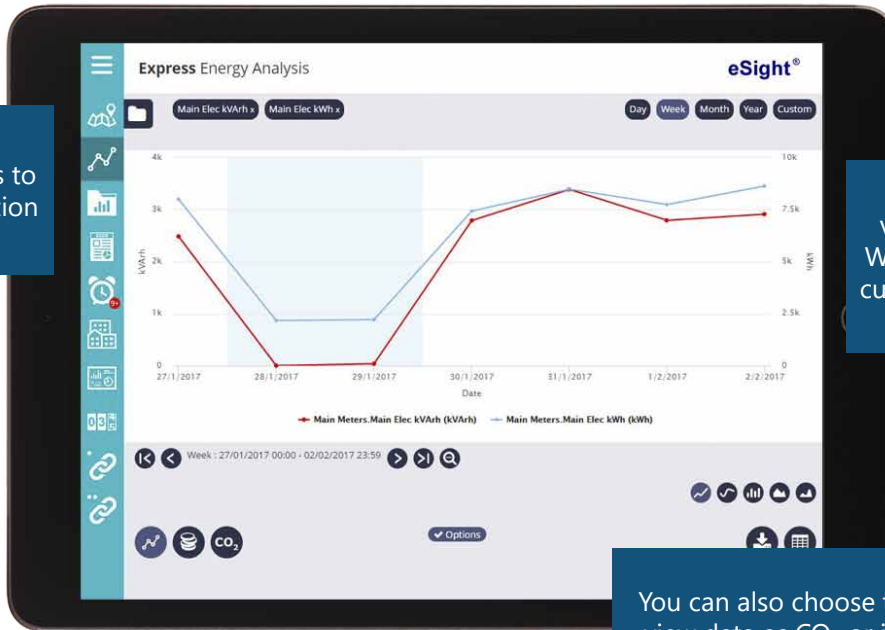


Clicking on a site will take you into the building, all the way down to meter level

Drill down further into the site by setting up multiple levels

Instantly updating Graphs

Open Energy Analysis to view meter consumption

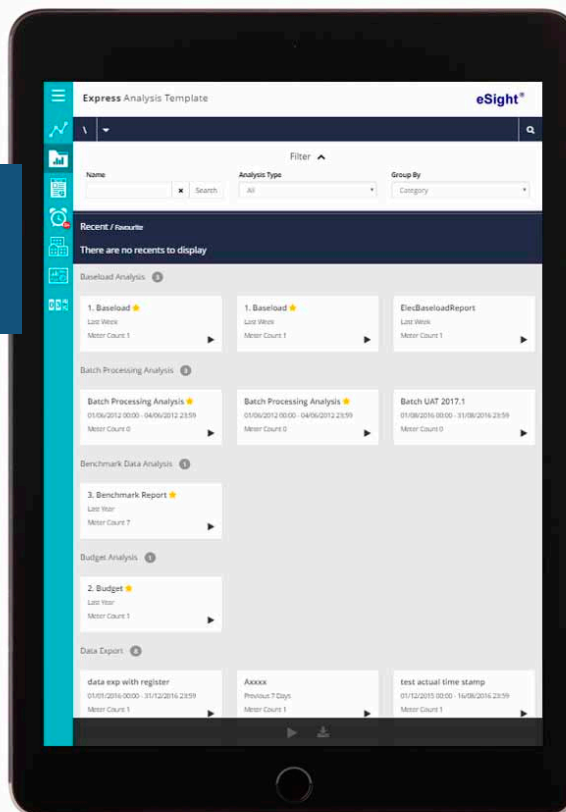


You can choose to view the data in Days, Weeks, Months, Years or customise your own date range

You can also choose to view data as CO₂ or in monetary value

New Template & Report Layouts

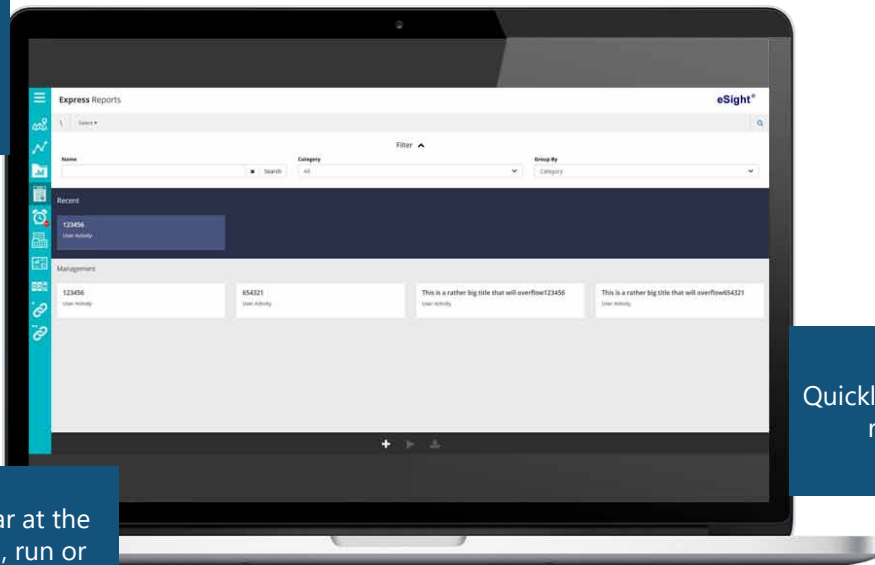
View and run Analysis Templates from a new menu screen



Filter quickly to view "Group By" Category or Path, or Analysis Type

Quickly access your recent or favourite analysis templates

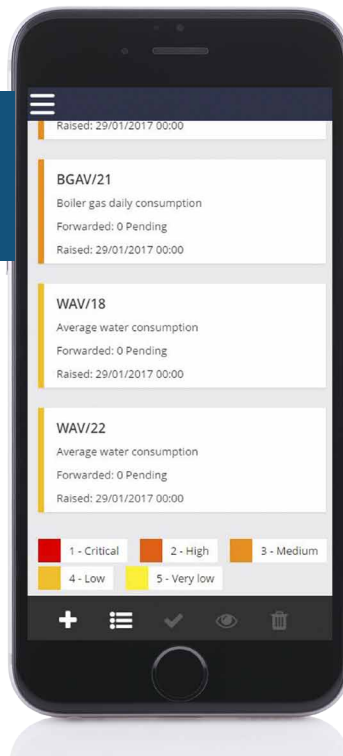
Run Reports from a redesigned screen layout



Quickly access your most recent reports

Use the task bar at the bottom to add, run or download a report

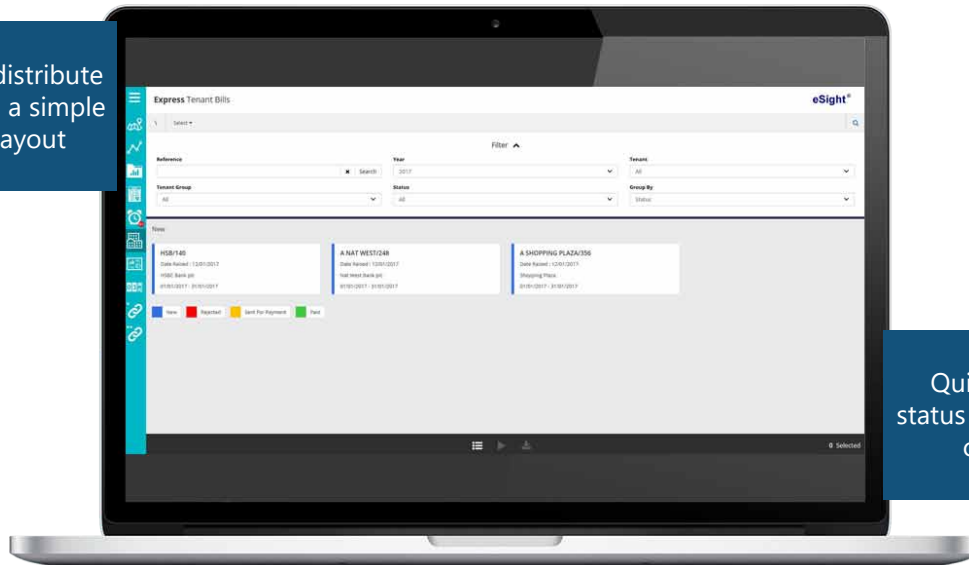
View and acknowledge raised alarms easily on any device



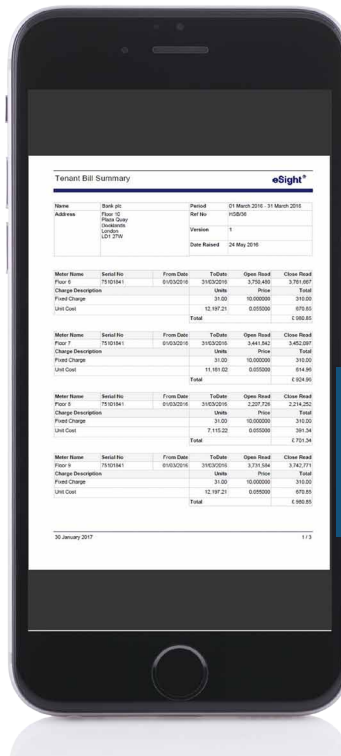
Colour coded options make it easy to see the level of alarm importance

Simplify Raising Tenant Bills

View, raise and distribute Tenant Bills from a simple card display layout



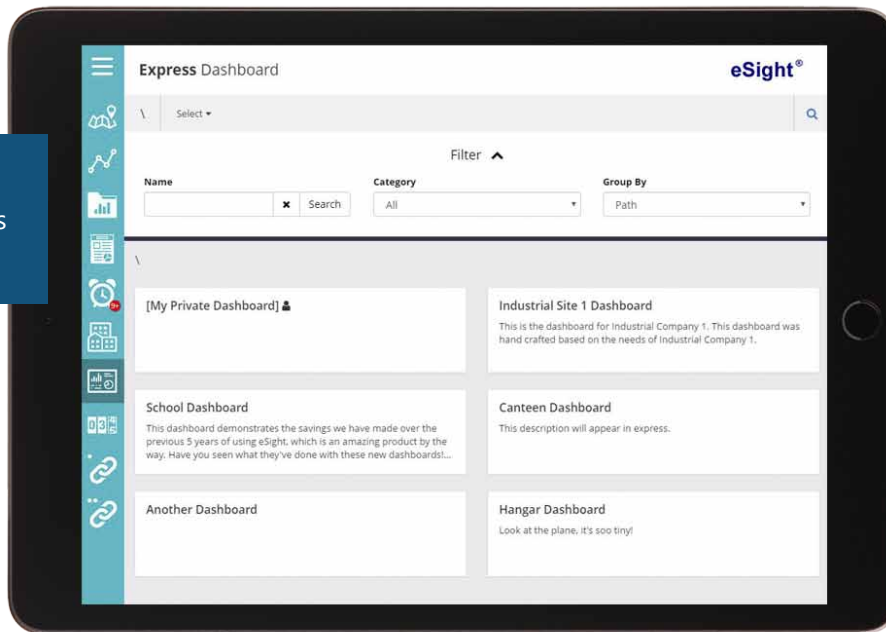
Quickly identify the status of your bills by the colour coding



Create PDF Tenant Bills on any device

Navigate through Dashboards

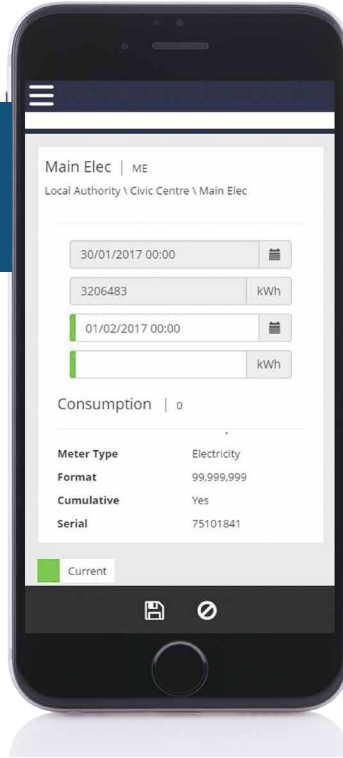
Open configured and system Facilities Dashboards



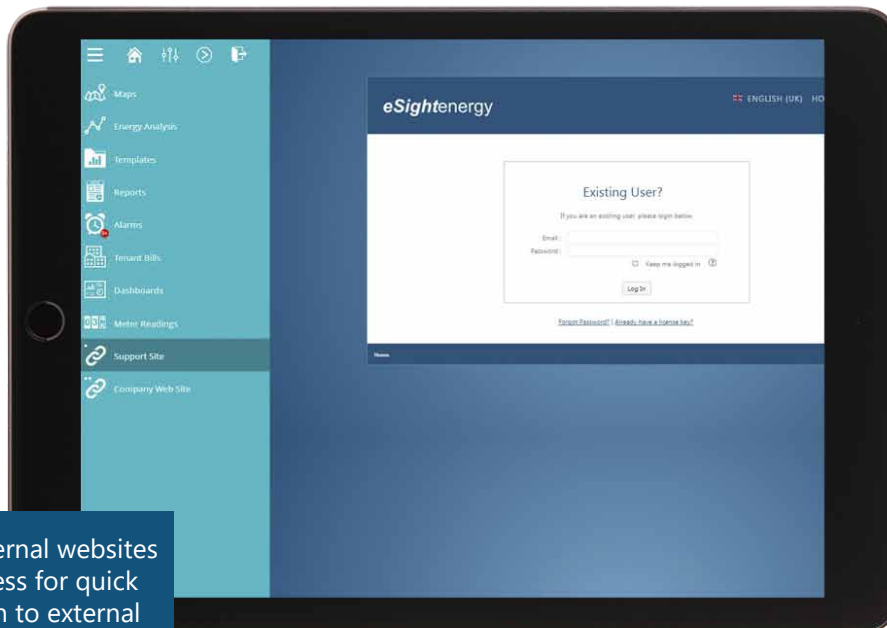
Dashboards display within the Express Interface

Manual Meter Readings made easy

Manually input Meter Readings in a simple interface



Follow a pre-defined meter 'Walking Route' for efficiency



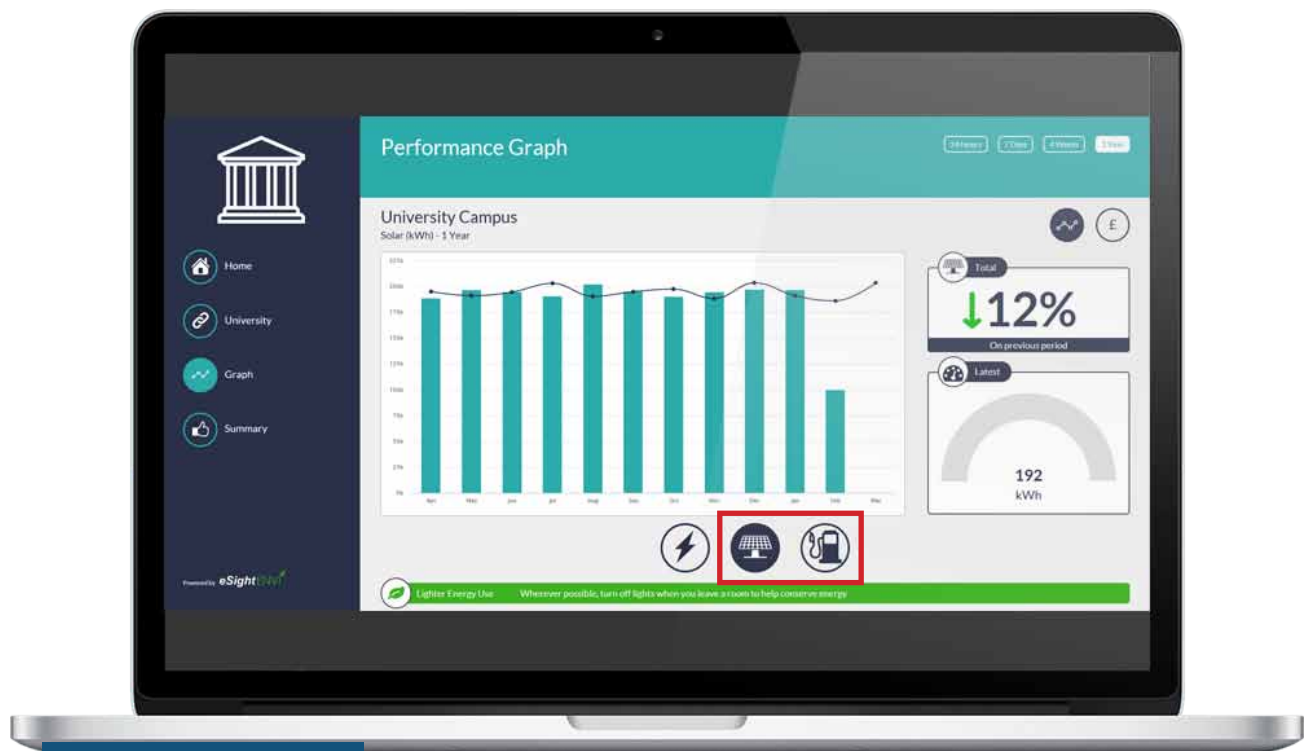
Embed external websites into Express for quick navigation to external platforms

ENVI

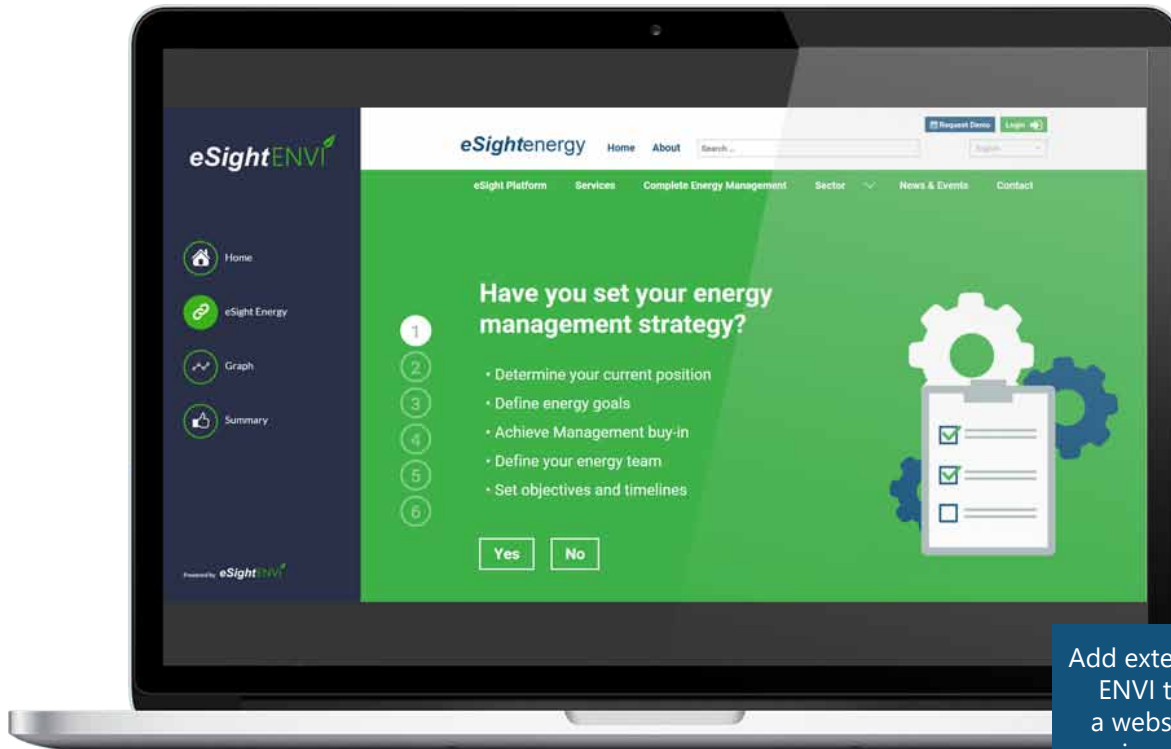
2017.2 sees the release of several key usability updates for ENVI. These were the top requested changes within our customer base and are aimed at ensuring ENVI can be used in a wider variety of applications. These new changes include support for additional unit types, display normalisation KPI's, support for energy production and custom content.

Key ENVI enhancements:

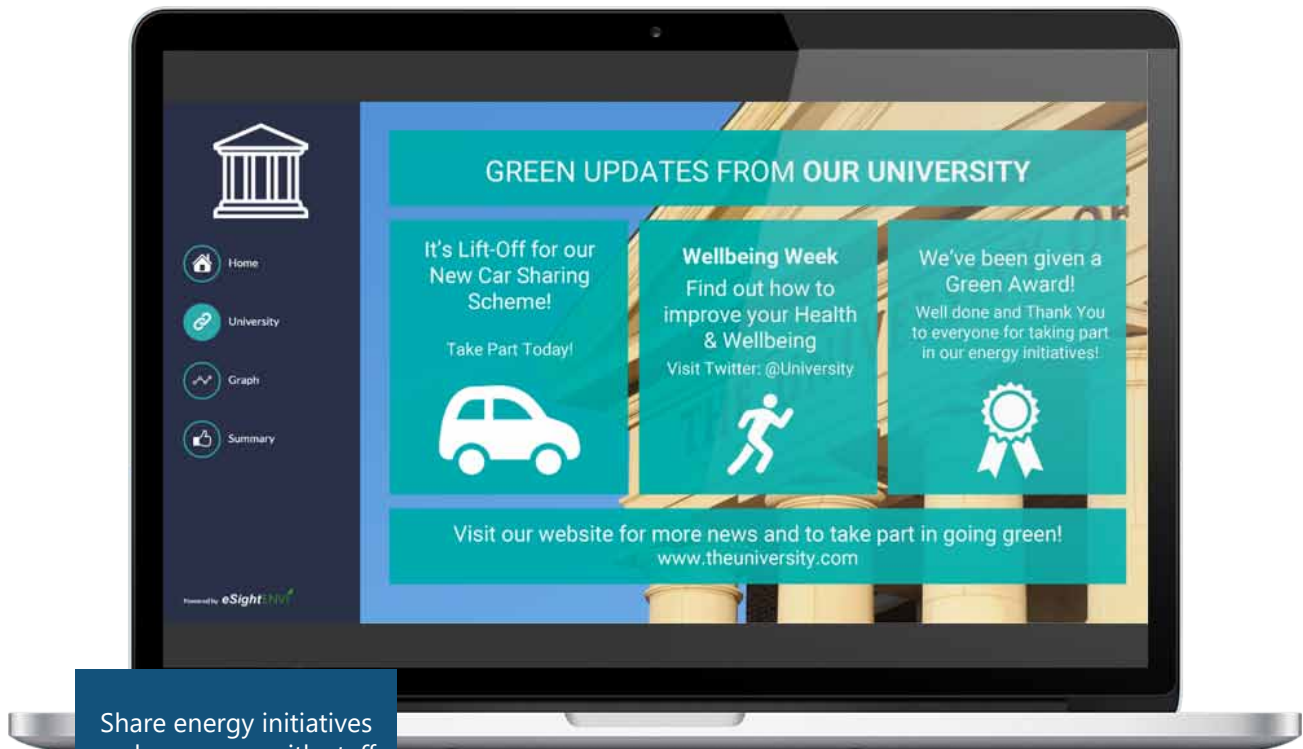
- Normalise consumption against production
- Display external webpage content inside ENVI
- Dashboard URL now configurable
- Customised green tips per dashboard



Select additional unit types including compressed air, coal, biomass, petroleum and custom units



Add external links within ENVI to navigate to a website, html page or image to promote corporate activity



Share energy initiatives and successes with staff and visitors

Additional features/changes

In addition to the new Express and ENVI functionality, the following updates and changes will be made in the 2017.2 release.

Contracts

- Ability to calculate and apply fixed charges for non-calendar month tariffs
- Additional search options added
- New user interface for contracts wizard
- Attachments can now be added to contract and contract history

Reports

- New user interface for report wizard
- High Level Analysis
- Select no path when you have access to the entire tree structure

Facilities Dashboard

- Can now be assigned to a category, making it easier to organise dashboards in the Express Interface

Image Maps

- Configuration is now relocated under the Configuration menu

Tags

- New Auto-Tags for all fuel types, main meters and pro-rata

Project Tracking

- Breakdown a policy's expected savings to site or building level
- Project Tracking Summary Report

*Preliminary information only – subject to change.