

## Dashboard Module

### Introduction

The eSight Dashboard module enables the user to bring together essential energy information, charts or tables on a single page. Through the Dashboard module, users may run up to four easily interchangeable screens side by side, with each screen automatically updating every minute. This gives an accurate view of vital information without having to flick between screens. The Dashboard module is an easy and convenient way of highlighting areas of performance which are most important to the energy manager.

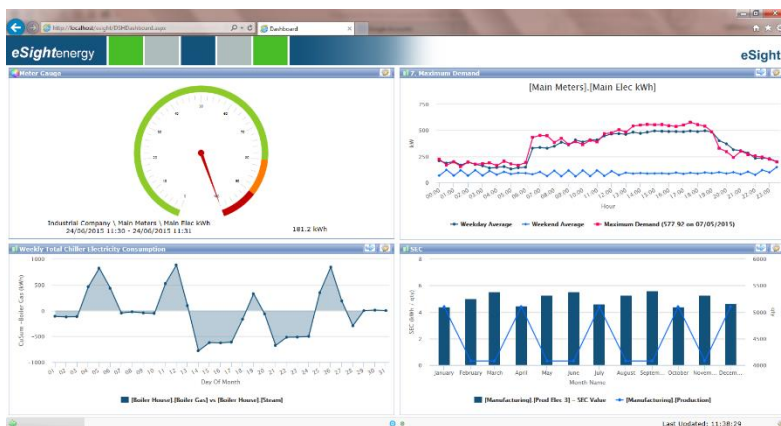
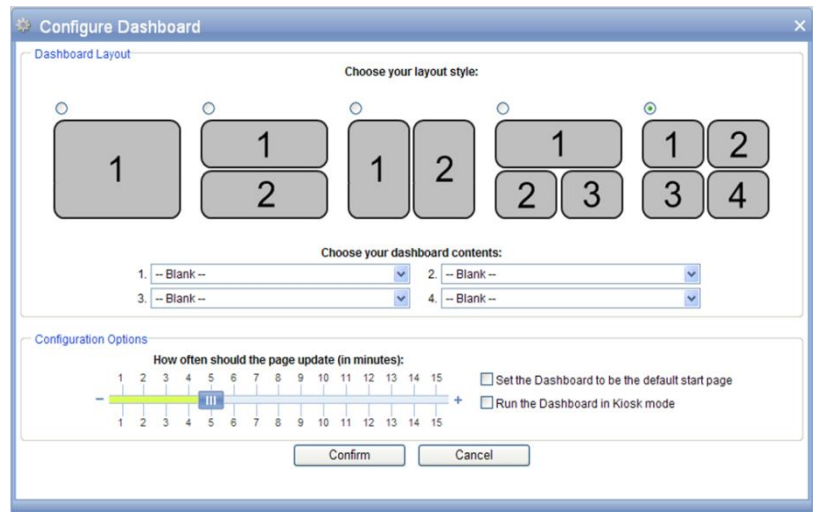
### Configuration

The eSight Dashboard module has been designed to be extremely user friendly and easy to configure.

Using any of the eSight modules, users can select up to four screens to run side by side on a single page.

The module can also be configured to be the first page viewed when logging on to the system.

Configuration is made simple through step-by-step screens; users are able to select the preferred layout by clicking the option of choice. Users may also choose how often the dashboard refreshes; key with monitoring real time data.



### Displaying Dashboards

The eSight Dashboard has been designed to enable companies to show information on a full screen, suitable for display in receptions or in public locations.

Called "Kiosk Mode", this is an excellent way for companies to promote their involvement with carbon reduction schemes and environmental projects, either across the organisation, or internally amongst staff.

Dashboards can either be displayed with a combination of reports, tables and graphs on a user's PC, or on a screen in a public or communal area for example.

Through the use of an interactive touch-screen display kiosk, placed in an area of focus, viewers are able to see and interact with up-to-date information on the energy efficiency and performance of the building they are in.