

Michelmersh Group Plc uses eSight® to monitor energy efficiency within manufacturing sites across the UK



Established in 1842, the Michelmersh Group is formed from five brick manufacturing companies located across the UK; Blockleys, Michelmersh, Charnwood, Duntons and Taperell Taylor. The companies produce a range of products including facing and special-shaped bricks through to roof tiles.

■ Background

The Michelmersh group produces over 75 million bricks per year. The process of brick manufacturing requires the use of gas fired kilns and dryers, which account for the majority of the energy being used.



Energy data was being collected and monitored both manually and via data loggers. However, Michelmersh found they were limited with the level of control and visibility they had over their energy consumption.

This was due to the lack of a dedicated M&T system to manage the energy and production data.

■ Requirements

Michelmersh required the ability to analyze production data with a view to gathering information on performance efficiency.

The process of data collection needed automating to save time, and complex historical energy data needed importing.

Michelmersh also wished to be able to alarm anomalies in energy profiles and to analyze tariff data against energy consumption.

The Michelmersh group of companies fall within the EU Emissions Trading Scheme. Another key requirement was for the effective management of emissions data across the five sites.



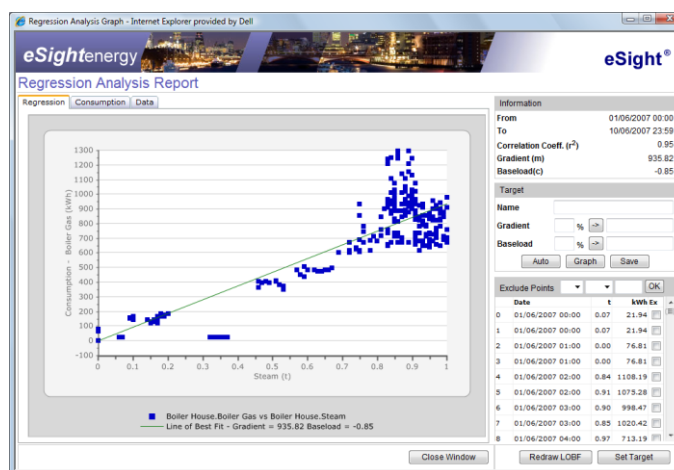
■ Solution

Michelmersh purchased eSight for use throughout the Group.

Complex historical energy data that had previously been collected and input into spreadsheets was imported into eSight during commissioning.

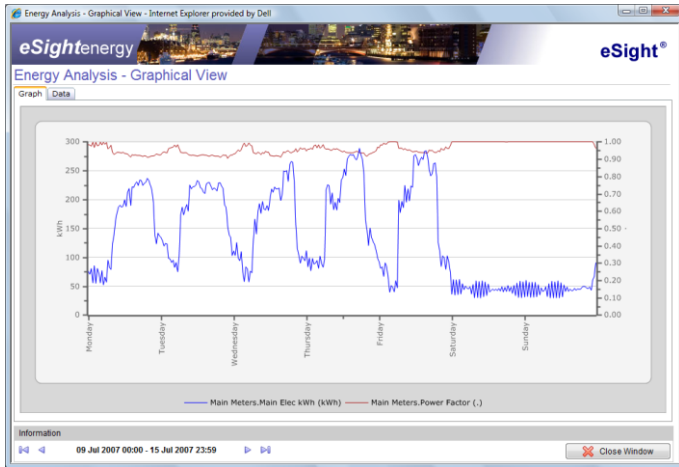
The eSight data import service was configured to import data from a range of electricity, gas and water meters via a combination of third party logging equipment and manual reads.

The facility to record production data was configured. This provided Michelmersh with the much improved ability to analyze performance efficiency and includes analysis of factors such as kiln firing energy against product manufactured.



Deployment of the eSight Emissions Trading Module also enabled the detailed analysis of emissions across all four sites. Thus helping to make decisions on when to trade allowances.

Michelmersh have also purchased eSight Energy's Report Designer for the ability to design and integrate user designed reports into eSight.



■ Technology

Michelmersh required an energy monitoring and targeting solution that was installed in a single central location within the group. They also needed to be able to access their energy M&T system from any one of the group company locations on an ad hoc basis.

eSight was the ideal solution; built upon robust browser based technology, eSight only needed installing to one server location. It was then possible to access eSight from any PC across the corporate network without the need to install anything on the users' PCs. The only application required on the client PC is Internet Explorer.

"eSight can be accessed from any PC on the corporate network. This flexibility was absolutely crucial; eSight will revolutionize the way we manage energy."

Paul Freeman

Technical Director, Charnwood Forest Brick

■ Results

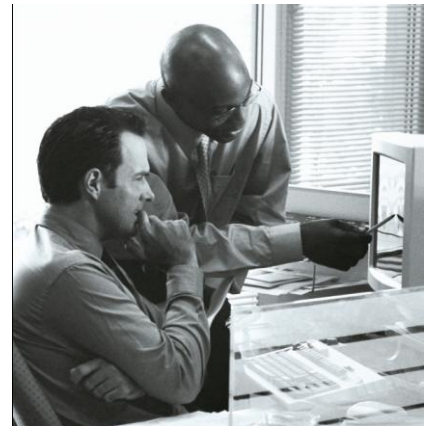
Meter data is compiled automatically, thus removing the need for much of the manual data entry. Time previously spent gathering data is now spent analyzing and implementing energy savings.

The Group uses a substantial number of gas fired kilns in their production process. Production data is now automatically imported into eSight for analysis. This provides vital statistics that can now be acted upon to improve efficiency, such as:

- Energy used per ton of product
- Number of kiln firings in a specific period
- Cost of kiln firings at different times
- Anomalies in energy consumption
- EUETS CO₂ emission reporting

Tailored reports within eSight are now automatically distributed via email across the Group.

Different divisions within the company such as finance, management and production are now able to receive data specific to their departmental requirements. Data which was previously unavailable is now accessible across Michelmersh and energy usage can now be monitored accurately with simplicity.



■ About eSight Energy Inc.

Brought to you by eSight Energy Inc., eSight is the most sophisticated and comprehensive energy suite available. Built upon the very latest Microsoft technology, the eSight suite provides an extensive range of techniques for analyzing energy usage and targeting sites for savings.

eSight may be used to monitor data from virtually any energy related system, including meters and loggers, building management and control systems, production data, spreadsheets, supplier data, oBIX and OPC data.

Please contact us for further information on how eSight can help your organization save money.